

- ▶ Retractable flap fitting
- ▶ For table extension runners with closed frame system

Retractable flap fitting



- ▶ Retractable, for extension leaves with a width of 500 mm
- ▶ For use in combination with table extension runners with closed frame system or central leg
- ▶ Please order hinges separately
- ▶ Steel, galvanised

Set comprises:

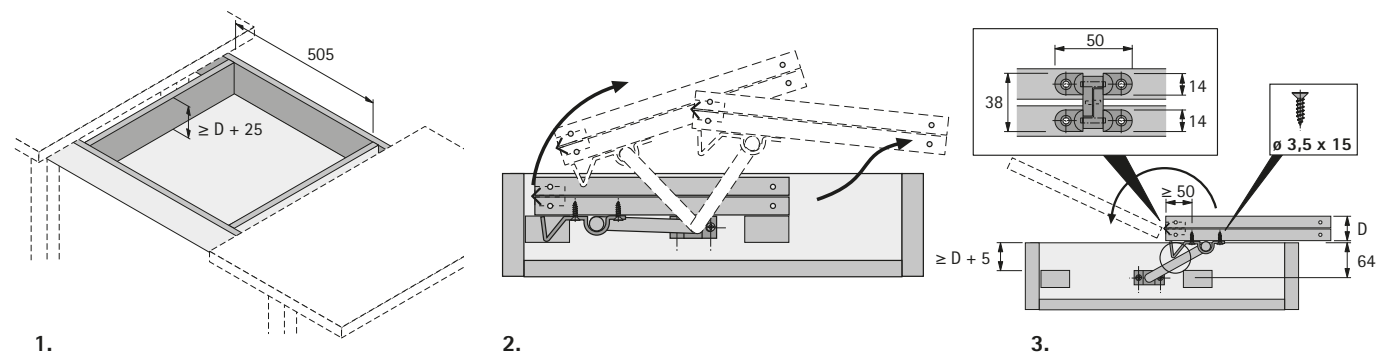
- ▶ 2 stop plates for extension leaf
- ▶ 2 bearings for turn bar
- ▶ 1 turn bar
- ▶ 1 frame system or central leg

Page reference:

- ▶ For hinges, see Furniture Fittings and Applications catalogue 2016, volume 1, chapter hinges

Order no.	PU
9 079 783	1 set

Planning dimensions



Operating principle

