

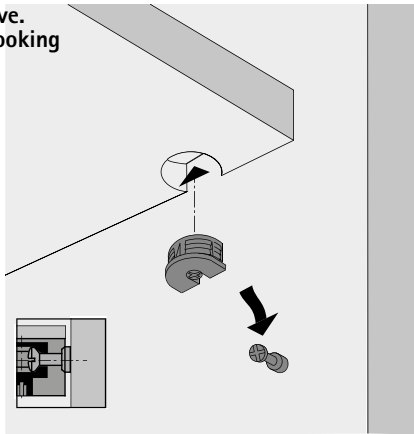
Eccentric cam connecting fitting

- ▶ VB 35 M
- ▶ With rib

Insert shelf from above.
Installation aid for hooking
in the shelves



$\angle \sim 5^\circ$



- ▶ Small connecting fittings for sturdy, positive fitting and friction locked connections between shelves and side panels using the tried and proven eccentric cam latching principle
- ▶ The fitting is pressed into the cropped 20 mm diameter drilling
- ▶ The fitting has a spherical eccentric cam
- ▶ Zinc die-cast / plastic
- ▶ Can be used in System 32

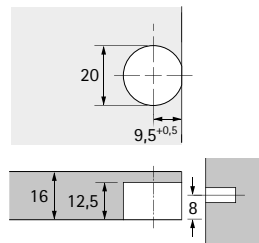
Page reference:

- ▶ For drill bits for hand and pillar drills, see page 1219

VB 35 M / 16 for 16 mm shelves



Drilling pattern for shelves



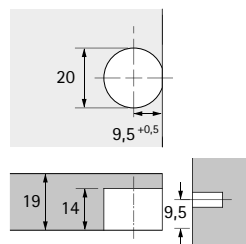
Dowel centre from
underside of shelf

Finish / colour	Order no.	PU
nickel plated	0 065 501	1/200 ea.
white	0 065 503	1/200 ea.
brown	0 065 504	1/200 ea.
black	0 079 644	1/200 ea.

VB 35 M / 19 for 19 mm shelves



Drilling pattern for shelves



Dowel centre from
underside of shelf

Finish / colour	Order no.	PU
nickel plated	0 065 505	1/200 ea.
white	0 065 507	1/200 ea.
brown	0 065 508	1/200 ea.
black	0 079 643	1/200 ea.