

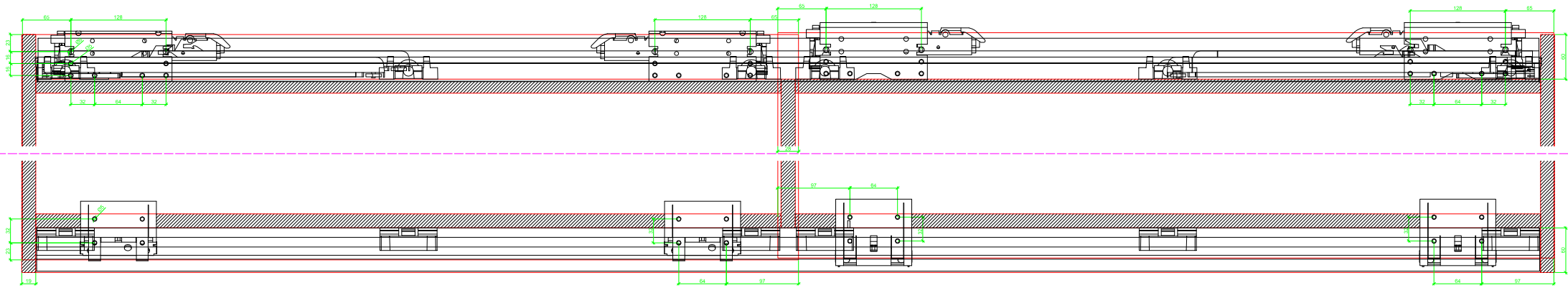
Drawings / Zeichnungen:  
TopLine XL

Technik für Möbel

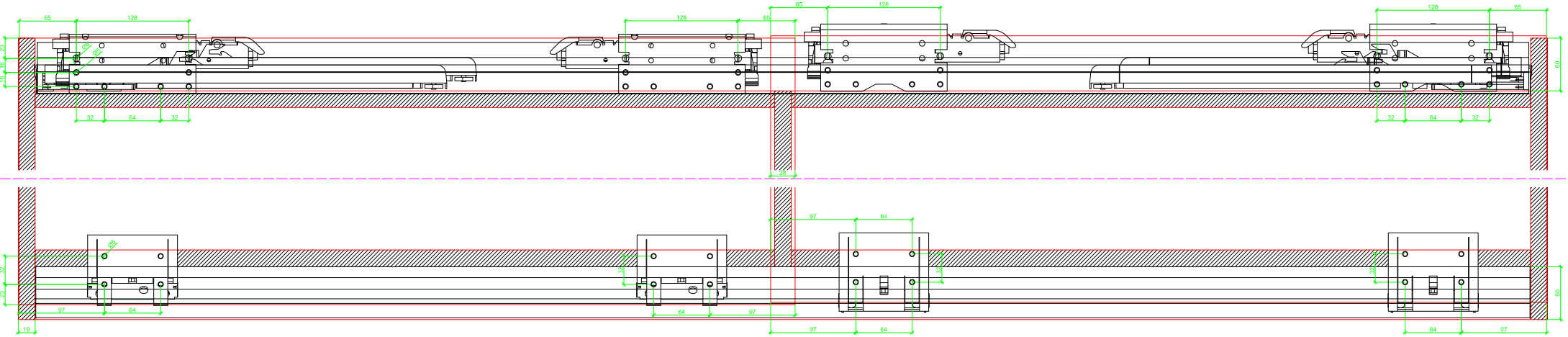
  
**Hettich**

Article / Artikel	9 275 794
Doors / Türanzahl	2
Door thickness / Türdicke	22 - 30 mm
Installed width / Einbaubreite	EB 30 - 38
Door running / Türlauf	in front of top panel / vor dem Oberboden
Bottom door guide / untere Türführung	STB 19 / 19.1

# Frontview / Frontansicht (STB 19)

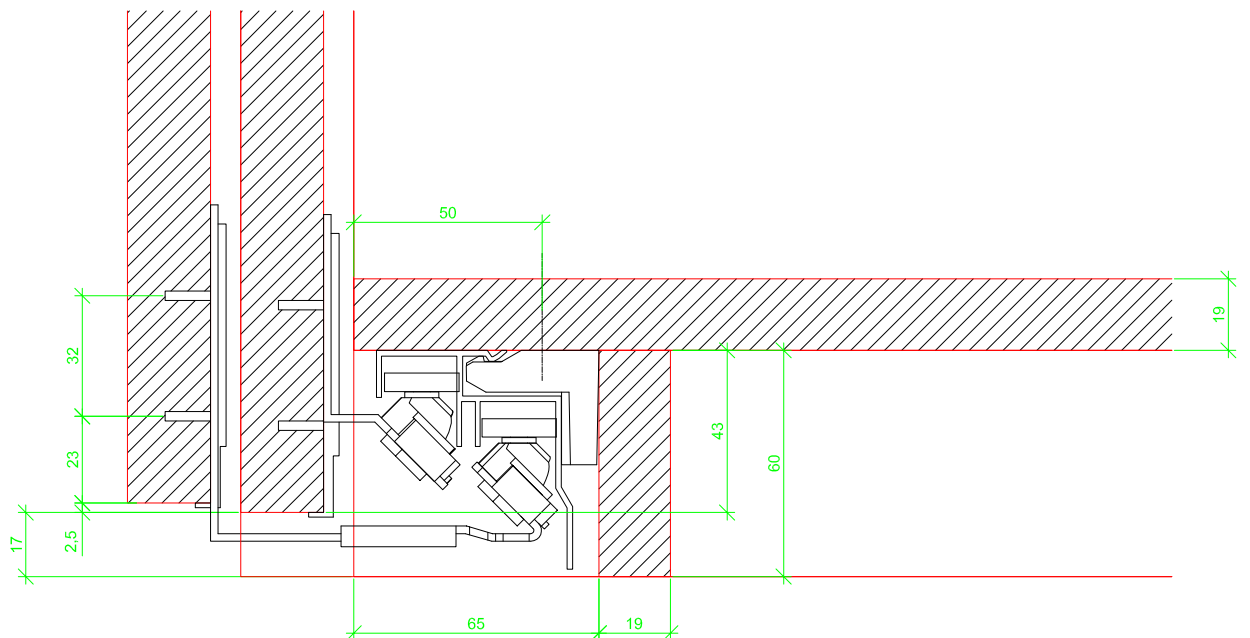
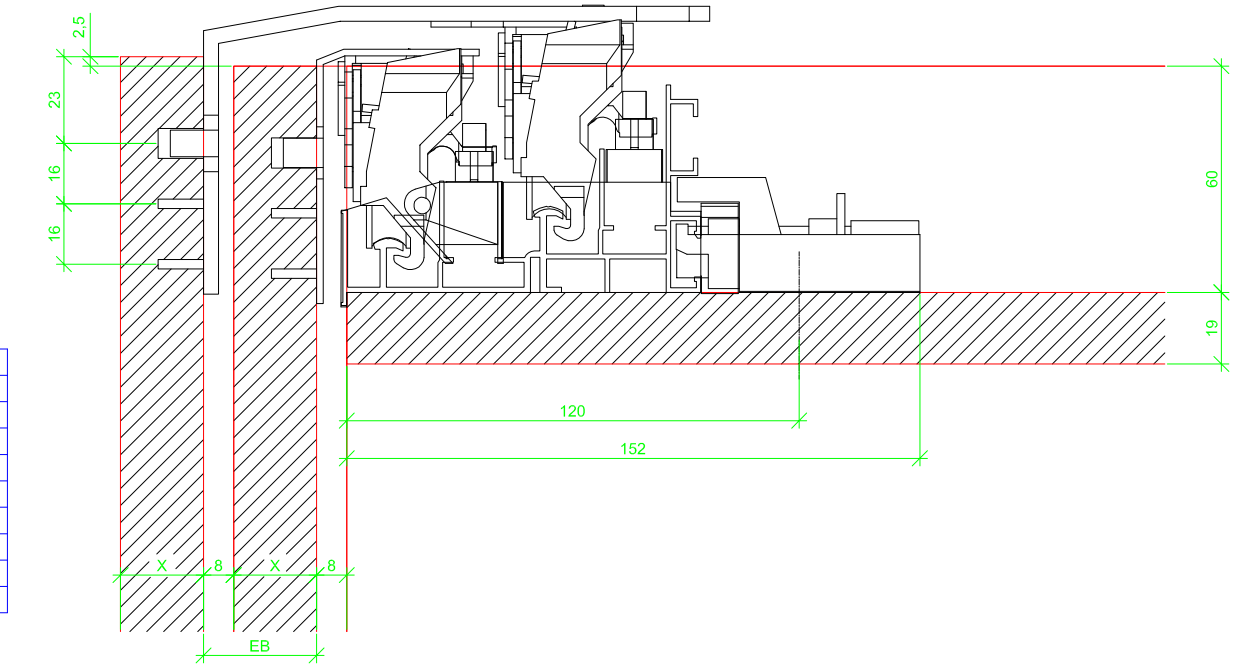


Frontview / Frontansicht (STB 19.1)



# Sideview / Seitenansicht (STB 19)

EB	X
30	22
31	23
32	24
33	25
34	26
35	27
36	28
37	29
38	30



# Sideview / Seitenansicht (STB 19.1)

